

1021 SECONDARY HEAD SENSOR KIT

INSTALLATION INSTRUCTIONS

AM-1021

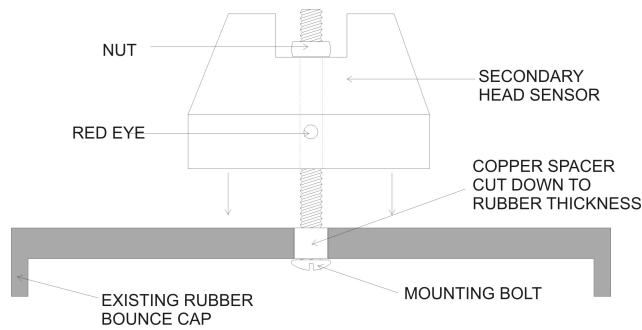


COMPONENT LIST

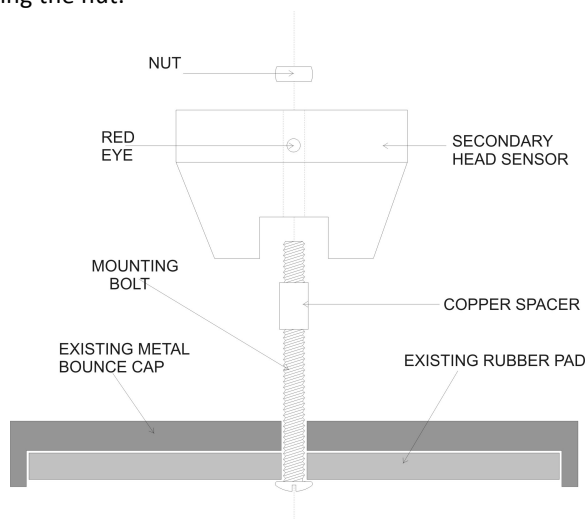
PART No.	DESCRIPTION	QTY
A-1021	SECONDARY HEAD SENSOR	1
AH-547	3 WAY JUNCTION BOX	1
HS-3/876SS	3/8 X 3 UNC SET SCREW S/STEEL	1
HN-3/8SS	3/8 UNC S/STEEL HEX NUT	1
HW-3/8	FLAT WASHER 3/8	1
HG-706	CABLE TIES 290 x 4.8 mm	3
AM-1021	SECONDARY HEAD SENSOR INSTRUCTIONS	1

INSTALLATION

Where possible, 1021 Secondary Head Sensors should be mounted with the top downwards and the nut between the legs as shown below.



If mounting sensors with legs downwards, a copper spacer must be used as shown below to prevent damage to sensor caused by over tightening the nut.



WIRING

Connect sensor to matching (RED, WHITE & BLACK) wires on main wiring loom. Use the table below to match older wiring systems.

RED	to	BROWN
WHITE	to	BLUE
BLACK	to	GREEN/YELLOW